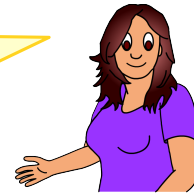
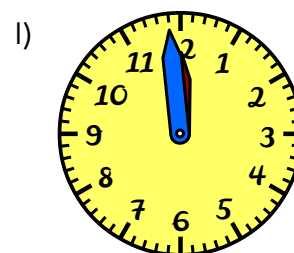
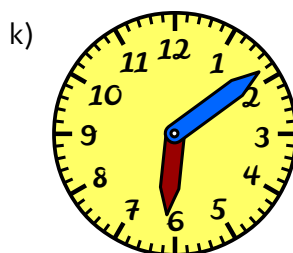
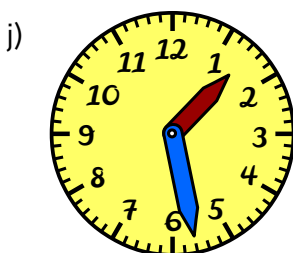
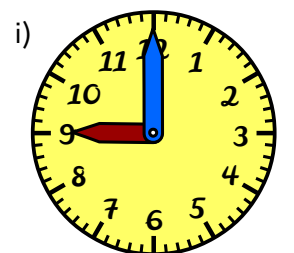
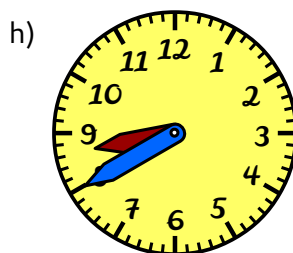
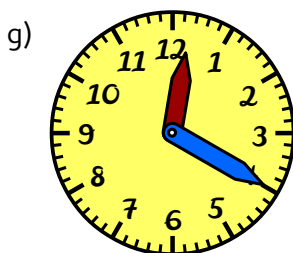
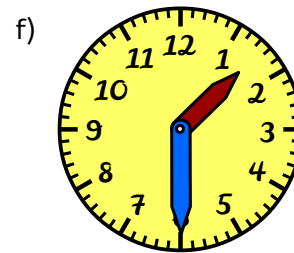
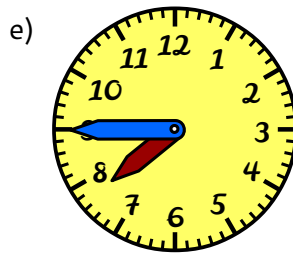
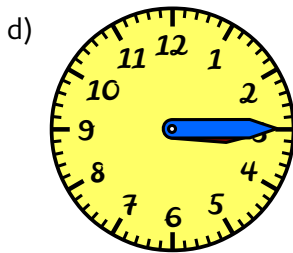
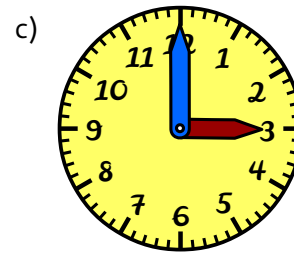
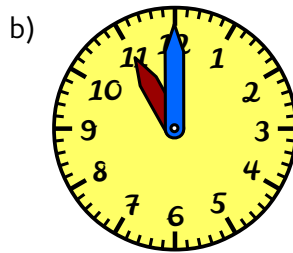
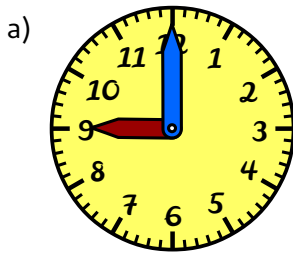




Die gezeigte Lösung ist die einzig richtige Variante – du kannst die Aufgabe nicht anders lösen.



Wo müssen die Zeiger stehen? Zeichne den Stundenzeiger und den Minutenzeiger entsprechend der Uhrzeit im Kästchen in die Uhr.



In unserer Bastecke findest du eine Zeigeruhr zum Ausdrucken, Ausschneiden und Zusammenbauen.